



MICHIGAN STATE
UNIVERSITY



ACAD-PLUS

PART OF ADDNODE GROUP

FMG-Plus for Planon

Combining Planon IWMS strengths with FMG-Plus CAD-focused tools:

- Efficient Floor Plan Maintenance
- Improved Accuracy

Presenters



MICHIGAN STATE
UNIVERSITY

Ric Bruce

- Interim Unit IT Manager
- bruceric@msu.edu

ACAD-PLUS

PART OF ADDNODE GROUP

Glenn Seehausen

- Founder of ACAD-Plus in 1986
- glenns@acad-plus.com

Others are here to answer your questions too!

- Alex Brown - VP of Solutions Development - abrown@acad-plus.com
- Ann Jimenez - Senior Key Account Executive at Symetri - ann.jimenez@symetri.com



MICHIGAN STATE UNIVERSITY

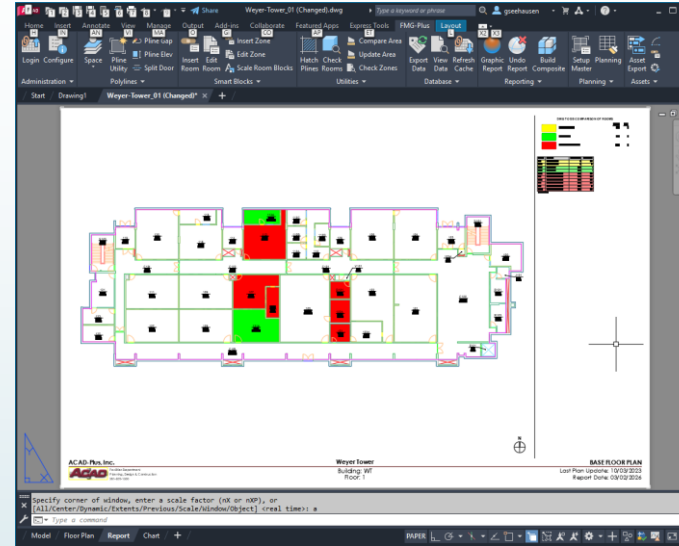
History:

- ▶ Used ACAD-Plus product with another IWMS from 2000 - 2023 (23 Years)
- ▶ Switched to Planon, going Live in 2023

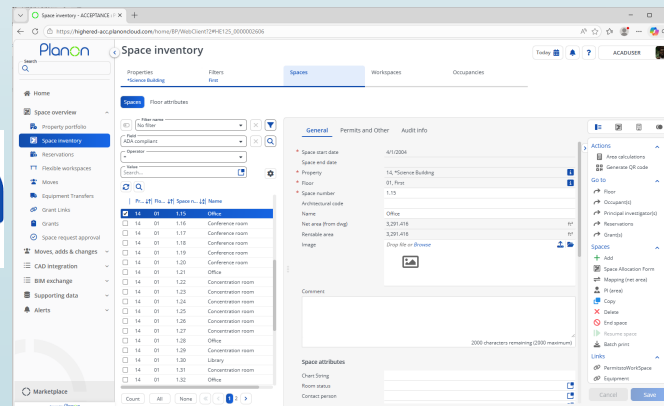
Why MSU re-adopted FMG Plus after switching to Planon:

- ▶ DWG Validation: Ensures room numbers, space plines, and gross plines meet Planon's import requirements
 - ▶ If a DWG passes FMG-Plus validation but fails Planon import, we will update our tool to add new validation. MSU has successfully used this process for thousands of DWGs.
- ▶ Includes using ZONES feature to maintain accurate Construction History (Building Additions)
- ▶ Reliably and automatically "feeds" Floor Plans into GIS (for 15 years with recent years into ESRI Indoors)
- ▶ Provides enhanced graphical reporting capabilities inside of AutoCAD (output as PDF), including Composites of multiple Buildings/Floors
- ▶ Now implementing the FMG-Plus ZONES feature for tracking HVAC Supply and Exhaust areas

FMG-Plus by ACAD-Plus



Planon
Building Connections



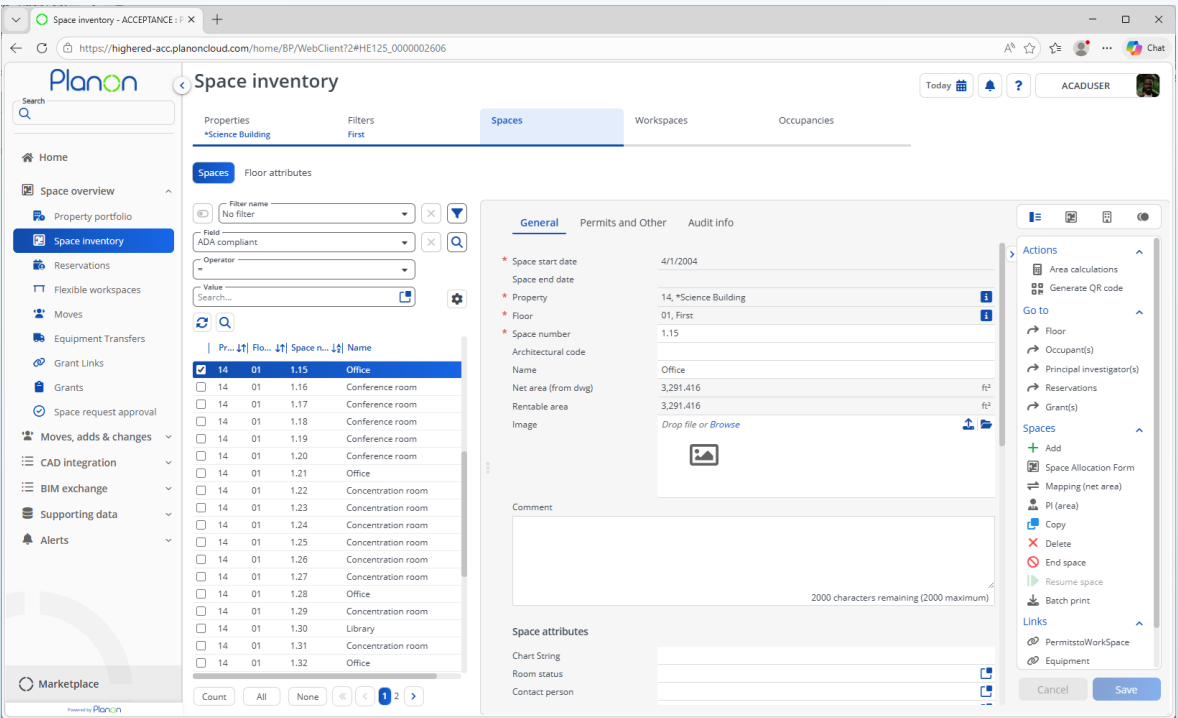
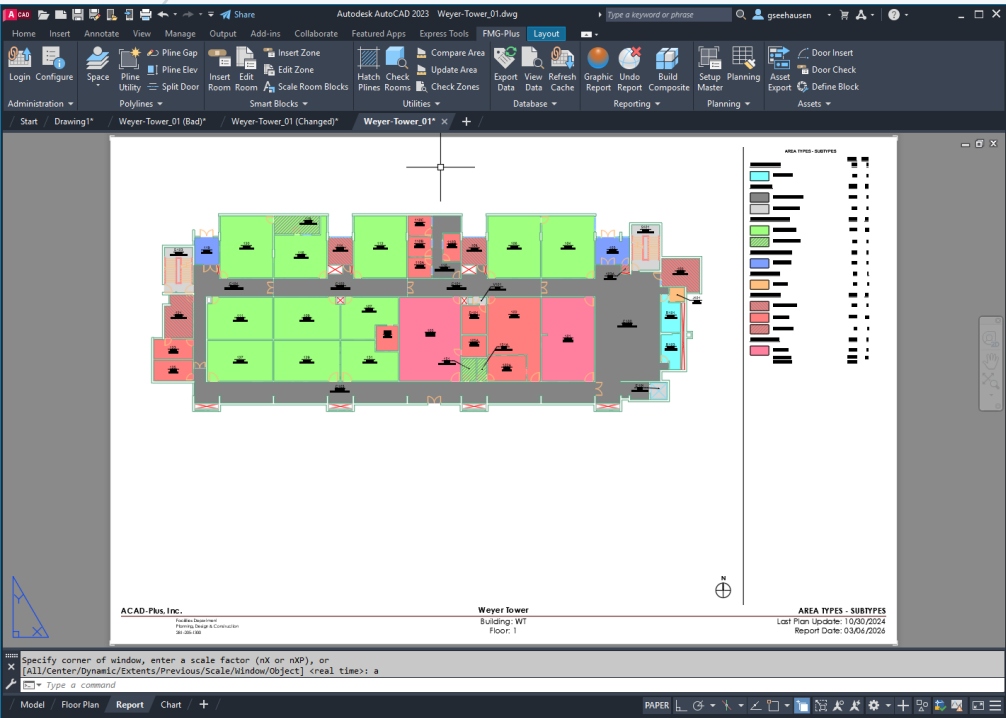
FMG-PLUS: Facilities Management Graphics inside of AutoCAD

FMG-Plus in AutoCAD

Document Changes



Planon IWMS Software



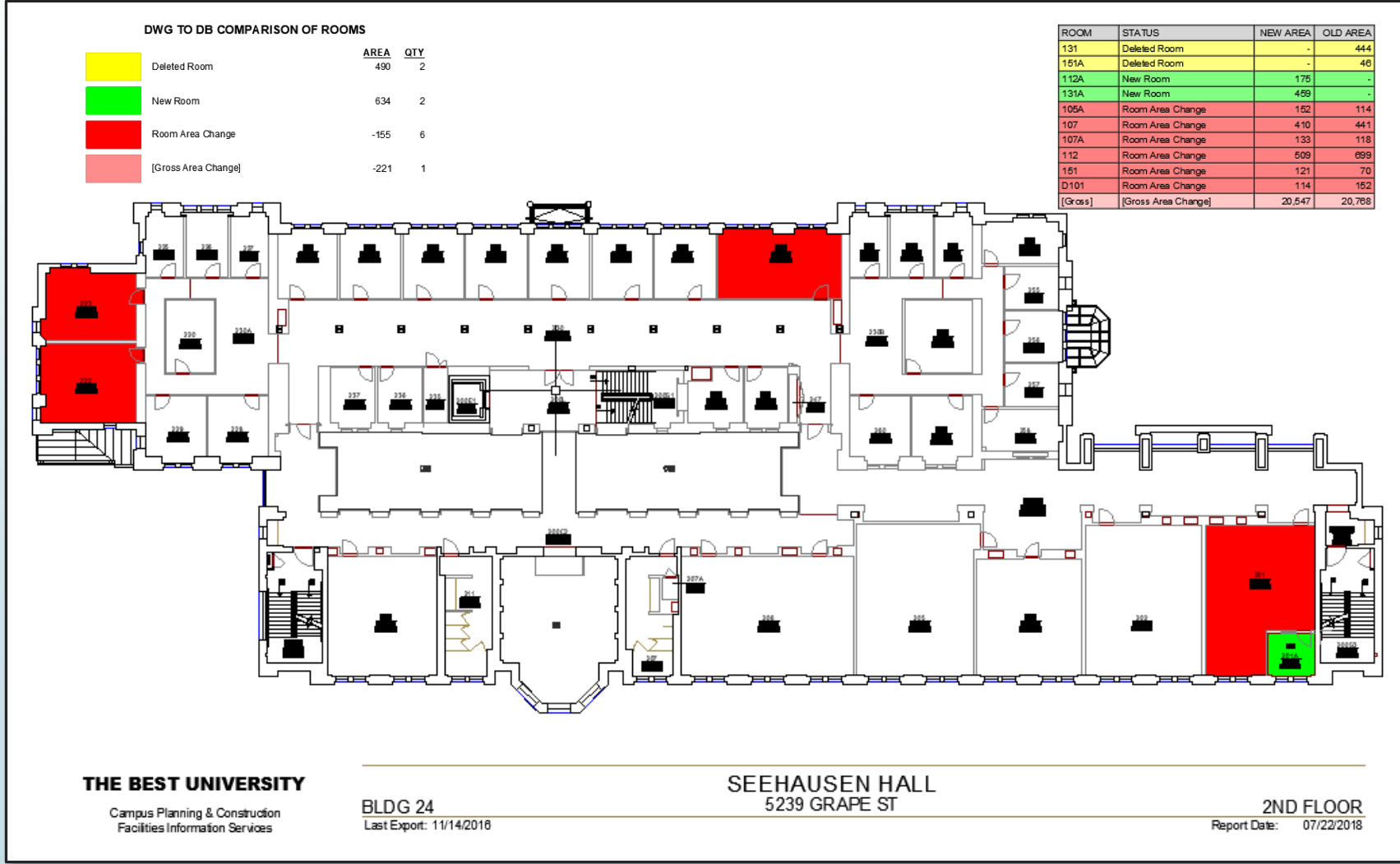
Interactive CAD Reporting



Planon Data

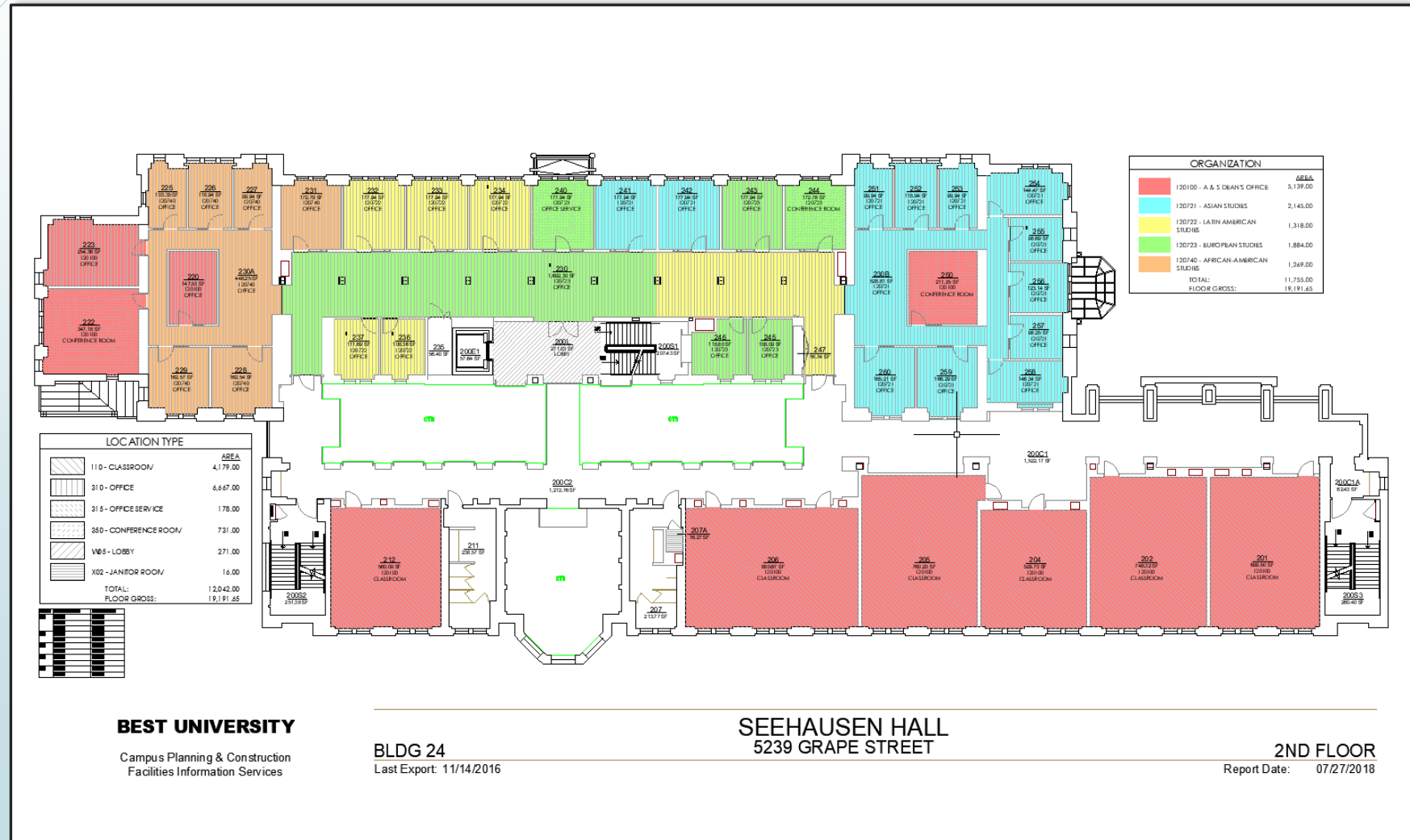
Document Floor Plan Changes

(Reporting of Changes, Saved as PDF)



Published Quality Graphical Reporting

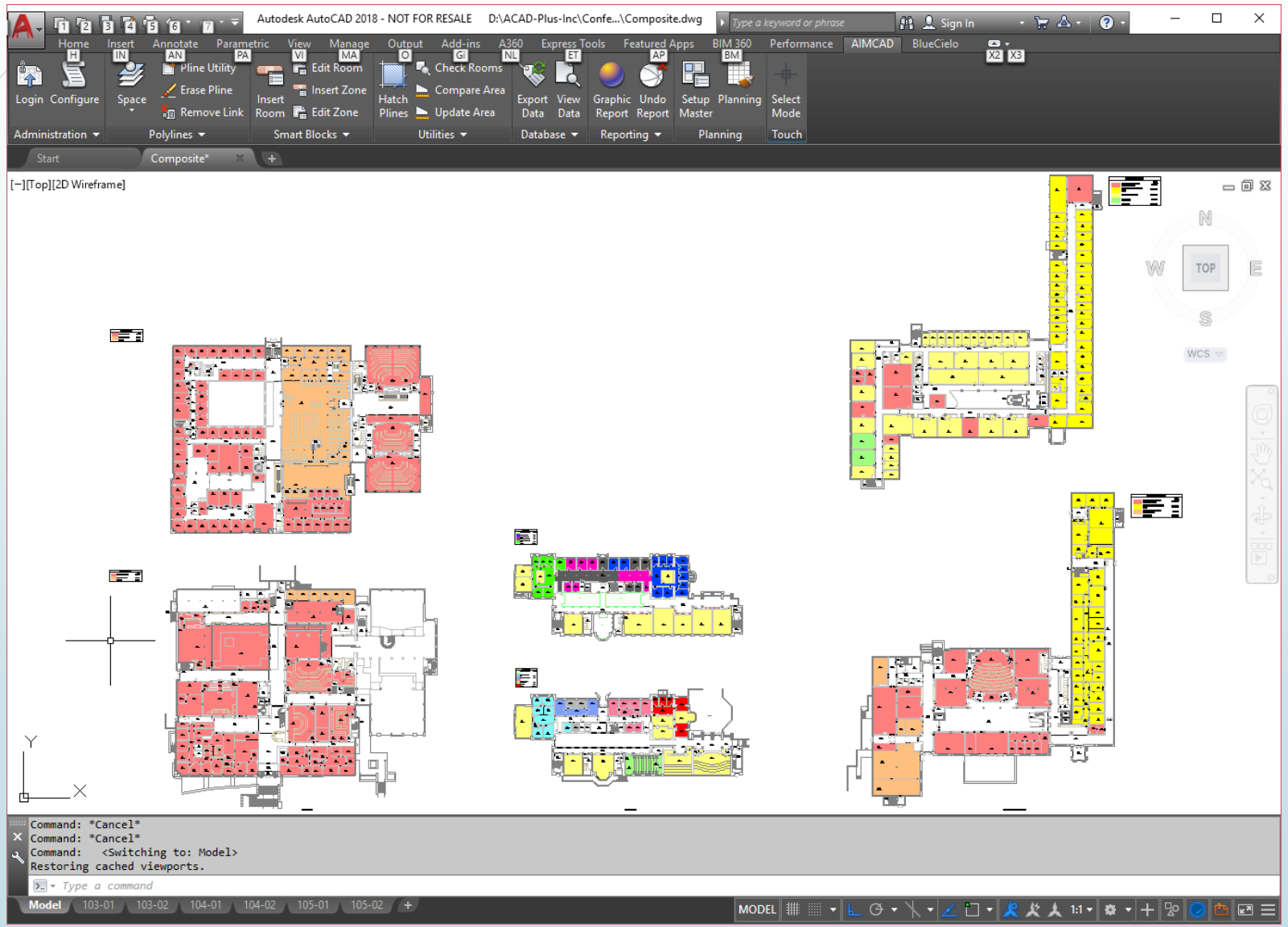
(Scriptable as PDF)



Building Isometric Composite Reporting

The screenshot displays the Autodesk AutoCAD 2023 interface with the 'Layout' tab active. The main drawing area shows an isometric composite report for a building, labeled 'Weyer-Tower_Iso'. The report consists of three levels, numbered 1, 2, and 3, each showing a floor plan with rooms color-coded by department. A legend on the right side of the drawing area, titled 'DEPARTMENT', lists the following departments with corresponding color swatches: Facilities (light blue), IT (orange), HR (yellow), Finance (red), and Operations (green). The report also includes a title block at the bottom with the following information: 'ACAD-Plus, Inc.', 'Facilities Department Planning, Design & Construction 20-200-100', 'Weyer Tower Building: WT', and 'DEPARTMENT'. The status bar at the bottom of the window shows 'Model Report WT-1 WT-2 WT-3 WT-1-Chart WT-2-Chart WT-3-Chart' and 'PAPER'. The command line at the bottom left shows the command 'XREF' and the status bar at the bottom right shows 'Type a command'.

Build Composites in Minutes





MICHIGAN STATE UNIVERSITY

Quote:

“I’ve been working with ACAD-Plus for about 25 years, and FMG-Plus has become indispensable for helping our team keep up with the continuous changes across 26.5 million square feet of operational drawings. It ensures every update is accurately documented and seamlessly loaded into Planon without errors. When you put these two systems together, you get a winning combination that’s unmatched in efficiency and reliability. I truly cannot imagine maintaining this volume of Space or Construction History data with the same level of accuracy or efficiency without FMG-Plus. Without this tool, we would need significantly more time and resources to achieve comparable results.”

Scott Friend

CAD \ BIM \ GIS Space Management Coordinator